

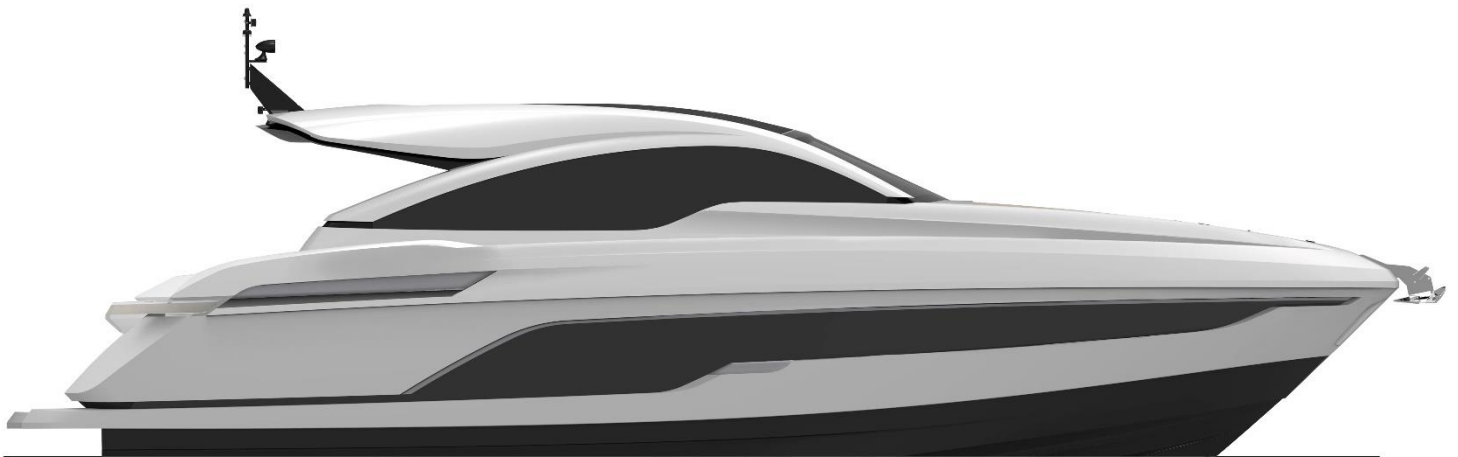
**TARGA 43 OPEN**  
**2018 Model Year – Standard Specification**

**Principle Dimensions**

Length overall (excluding pulpit)	45'7" (13.9m)
Length of hull:	42' (12.8m)
Beam (inc. gunwale):	14'2" (4.32m)
Number of berths:	4 - 5
Draught:	3'10" (1.17m) unloaded
Height above waterline (inc. arch & nav. light mast):	18'2" (5.55m)
Transport height:	16' (4.87m)
Fuel capacity:	286 gallons / 343 US gallons (1,300 litres)
Water capacity (inc. calorifier):	88 gallons / 105 US gallons (400 litres)

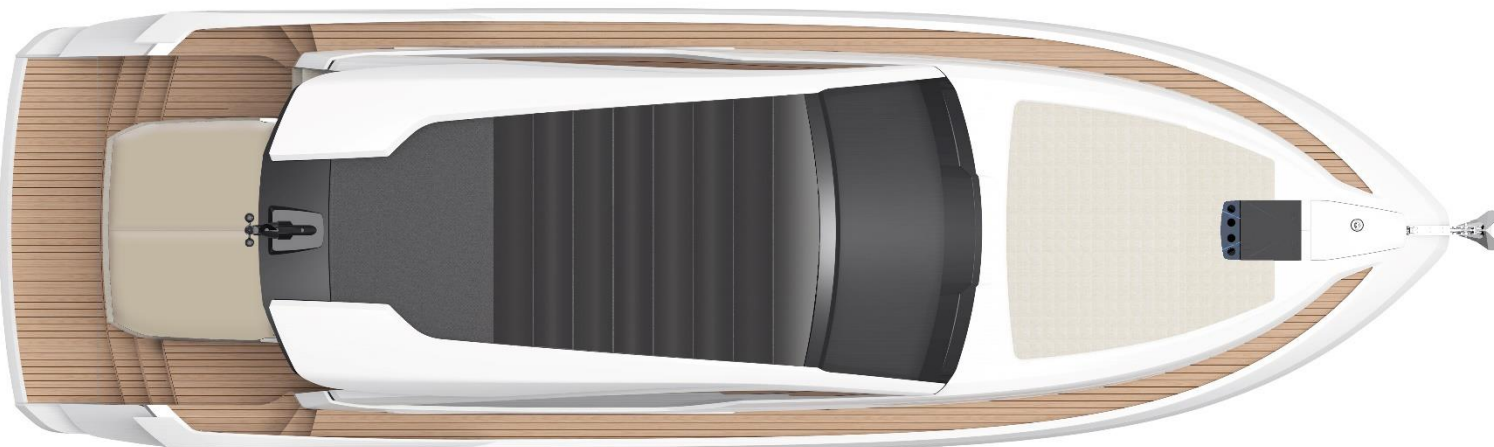
**Engines & Performance**

2 x Volvo Penta D6-370 stern drive, diesel (370mhp each):	28 knots (estimated)
2 x Volvo Penta IPS500 D6-370, diesel (370mhp each):	32 knots (estimated)
2 x Volvo Penta IPS600 D6-435, diesel (435mhp each):	34 knots (estimated)

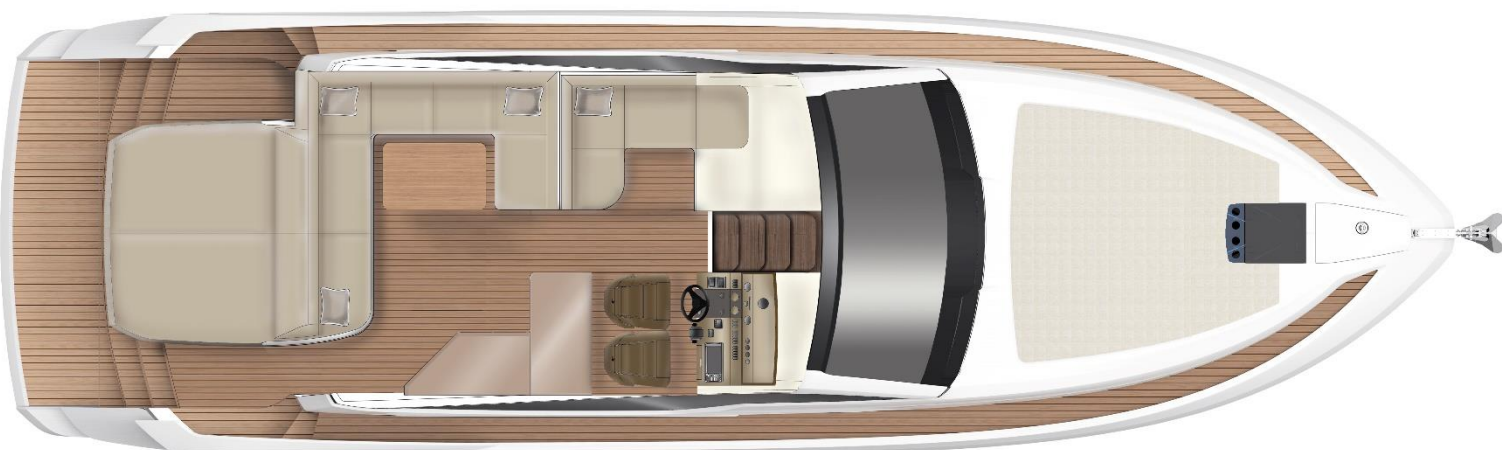


**GENERAL ARRANGEMENTS**

**Exterior Deck**

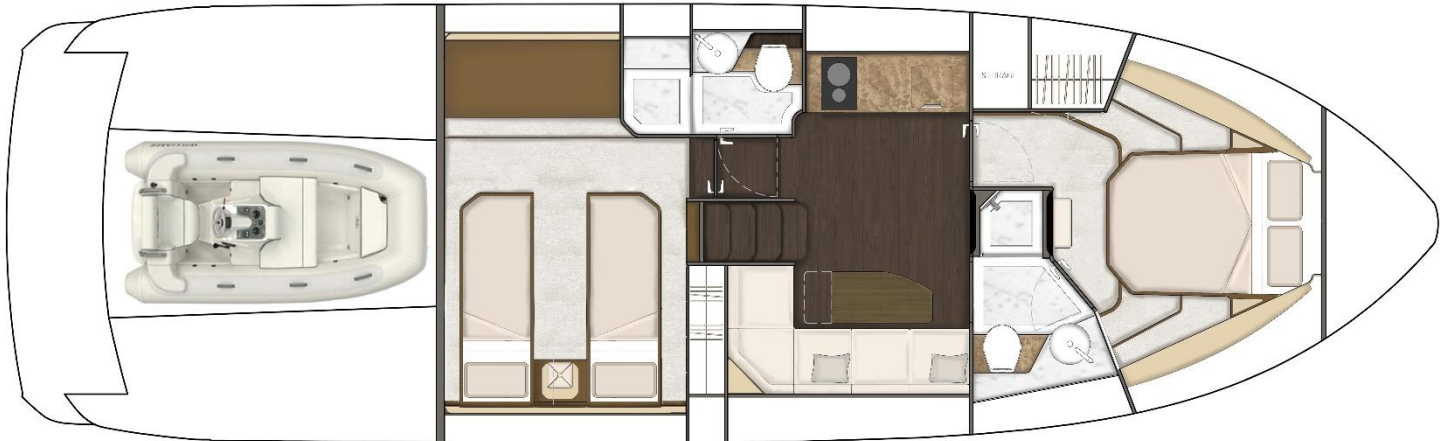


**Main Deck**



## GENERAL ARRANGEMENTS

### Lower Deck, Master Cabin Forward



### Lower Deck, Master Cabin Aft (option)





## **Deck**

Anchor chain locker  
Anchor winch controls  
Anchor winch (electric)  
Calibrated anchor chain  
Dinghy garage (to fit Williams 285 TurboJet)  
Ensign staff  
Fender set  
Full set of IMCO navigation lights  
Hot & cold water transom shower  
Moulded non-slip deck surface  
Recessed self-draining area on foredeck for coachroof sun cushions  
Riding light  
Rubbing strake  
Self-stowing Delta® anchor  
Stainless steel bow fairleads  
Stainless steel bow, spring & stern cleats  
Stainless steel handrails  
Stainless steel pulpit  
Stainless steel stemhead roller  
Stainless steel transom wing cleats  
Swim ladder to bathing platform  
Teak-laid bathing platform  
Toughened glass curved windscreen  
Transom gate from cockpit to integral bathing platform  
Twin horns  
Water filler  
Windscreen washers  
Windscreen wipers

## **Helm Position**

12V socket  
Bilge pump switches with integral operating warning lights & audible alarms  
Twin helm seats  
Controls for engine bay fire extinguisher system  
Drinks holders  
Electronic single-lever throttle & gear controls for port & starboard engines  
Folding foot plinth  
Fuel gauges  
Full engine instrumentation including; tachometers, oil pressure gauges, temperature gauges, audible alarms & engine hour meters  
Garmin GMi 20 digital multi-function instrument system with colour display  
Garmin VHF marine radio  
Garmin GCi 20 Autopilot  
Helm position indicator  
High-speed magnetic compass  
IPS joystick (with IPS engine variants)  
Opening window (manual operation)



### **Helm Position (continued)**

Remote anchor winch controls

Searchlight with remote control at helm

Waterproof switches for navigation & riding lights, windscreen wipers & engine bay extractor fan

### **Electrical Systems**

All 240V, 24V & 12V circuits (where applicable) protected by circuit breakers with main electrical load control panel

Electrical sockets

Heavy duty circuit breakers

Isolating switches to all batteries

#### **12 Volt**

Batteries – 2 x heavy duty batteries for domestic services

1 x heavy duty battery for exclusive port engine starting

1 x heavy duty battery for exclusive starboard engine starting

Emergency battery coupling system permits starboard engine to start port engine if domestic batteries accidentally discharged

#### **240 Volt**

Polarity check & earth leakage protection system

Power points throughout the boat fed from shore power or generator

Regulated battery charger

Shore power supply

### **Cockpit**

12V heavy duty weatherproof socket

Bar unit with sink

Bathing platform lights

Boat hook

Central dining area with foldaway GRP table

Companion seating to helm

Drinks holders

Engine bay access hatch

Fender stowage

Fenders x 5

Fusion RA205 audio unit with Bluetooth connectivity

Life raft stowage

Manual bilge pumps

Mooring warps

Moulded non-slip deck surface

Stainless steel handrails

Step for side deck access

Stowage lockers

Warp lockers

Wrap around seating with sunbed conversion

Waterproof speaker's x 2



### **Interior Décor**

Choice of interior finishes from the Amalfi, Capri, Hamptons or St Tropez interior styling ranges selected by the Fairline Interior Design Team

### **Hull & Construction**

Antifouling protection to hull

Deep 'V' hull

Design, layout & detailing by AM Yacht Design and the Fairline design team

Full length moulded spray deflectors

Hard top with electric sliding canvas roof

Hull colour – White

Integrally moulded engine bearers

Polyurethane foam cores throughout deck for strength & thermal insulation

Resin infused hull & internal liner

Transverse & longitudinal strengthening stringers throughout hull

### **Lower Saloon**

24” Samsung HD LCD television

Access to day head

Aerial & connections for television

Companionway timber steps with handrail

First aid kit

Fixed height dining table

Hull window

‘L’ shape sofa

LED ceiling lights

Lockers (overhead)

Sliding door to cockpit with integral blind system

Stowage locker under dinette seating

Stereo with Bluetooth

Underfloor stowage locker

### **Galley**

Control panel for 12V/240V domestic electrical circuits

Crockery stowage

Extractor fan

Fire extinguisher

Foundations® work surface with covers

Hob (2 burner)

Integrated waste bin

### **Galley (continued)**

Lacquered cupboard doors  
LED ceiling lights  
Lockers (overhead)  
Microwave combi oven  
Sink with hot & cold mixer tap  
Fridge/freezer with automatic 12V/240V change-over  
Underfloor larder  
Work surface lights

### **Forward Cabin**

Access to en suite  
Full length double bed with optional scissor berth  
Full length mirror  
Hatch to foredeck  
LED ceiling lights  
Mirror  
Opening portholes  
Overhead glazing  
Reading lights  
Wardrobe

### **Forward Cabin En Suite**

220V/240V shaving point  
Automatic shower tray pump-out system  
Electric silent-flush freshwater toilet  
Extractor fan  
Solid surface vanity unit locker & basin with hot & cold pressurised water  
Full set of bathroom fittings  
Full standing-height shower with integral shower tray & adaptable shower head  
Hand basin with hot & cold water  
Mirror  
Opening porthole  
Stowage locker

### **Aft Cabin**

Access to en suite  
Drawer pack with optional sofa bed conversion  
Twin single beds with conversion to double  
Full length mirror

### **Aft Cabin (continued)**

LED ceiling lights  
Opening portholes  
Reading lights  
Wardrobe

### **Aft Cabin En Suite**

220V/240V shaving point  
Automatic shower tray pump-out system  
Electric silent-flush freshwater toilet  
Extractor fan  
Foundations® vanity unit locker & basin with hot & cold pressurised water  
Full set of bathroom fittings  
Full standing-height shower with integral shower tray & adaptable shower head  
Hand basin with hot & cold water  
Mirror  
Opening porthole  
Stowage locker

### **Engines & Sterngear**

Automatic bilge pumps for engine bay with a manual 'on' override  
Automatic engine bay fire extinguisher system  
Electric engine bay fans  
Electric trim tabs with cathodic protection  
Engine bay lights  
Engine room soundproofing  
High capacity emergency manual bilge pump system with changeover valves  
Sea cocks on all inlets/outlets below waterline

### **Fuel System**

Changeover valve system to permit each engine to draw fuel from & return fuel to either tank  
Emergency fuel shut-off valves  
High capacity water separators & fuel filters  
Individual fillers & vents to port & starboard  
Twin fuel tanks with balance pipe

### **Freshwater System**

Automatic, pressurised supply  
Calorifier hot water system  
Water tank





## **Black Waste**

Holding tank

## **USA Specifications** (in addition to or in lieu of those listed above)

Voltage - 2 x 110V (220V) 60Hz

Whilst every effort is made to keep all sales literature up to date, it should not be regarded as an infallible statement of current specifications & does not constitute an offer for the sale of any particular boat. We continually seek to improve the specification & design of our boats, so alterations & upgrades to specifications take place continually.

Appointed dealers are not agents of Fairline Yachts Ltd & are not authorised to commit Fairline Yachts Ltd by any express or implied undertaking or representation.

Performance Figures: Power quoted in our literature for diesel inboard engines is crankshaft output.

Performance Estimates: Performance estimates are given in good faith, but are in no way guaranteed for any particular model. Dirt on the bottom of the boat, damage to the propellers, engine tuning, external water & air temperatures & the weight of crew, fuel & water carried can all adversely affect performance. For those & other reasons we can give no performance guarantees.